



▶ PACE IS THE OFFICIAL VOICE OF CSI'S NON-TEACHING, NON-ADMINISTRATIVE EMPLOYEES.



▶ UPCOMING EVENTS. PACE AND OTHER GROUPS ORGANIZE DIFFERENT EVENTS FOR ALL AGES. CHECK THEM OUT HERE.....4



▶ NEW FACES ON CAMPUS. SEE WHO'S NEW AND WHERE THEY WORK. MAKE SURE TO SAY HI WHEN YOU MEET THEM....5

PACE News

Every professional and classified employee, both full- and part-time, is automatically a member of PACE.

PACE provides a wonderful opportunity for our classified and professional employees to get together, network and stay "in the know" about things going on at this wonderful campus of ours. If you want to become more involved, contact your building representative. Find out who your Rep is here: <http://pace.csi.edu/representatives.asp>

Spotlight

STACEY "AX" AXMAKER
IDAHO **STAR** MOTORCYCLE SAFETY PROGRAM

Why I support my staff participating in PACE

This is Stacey 'Ax' Axmaker, Director of the Idaho **STAR** Motorcycle Safety Program. As many of you already know, the **STAR** Program is located in Boise, is a PTE program operated by CSI, and is one of the programs that Mike Mason oversees. Since we became a part of the College of Southern Idaho in 2009, we have always sent a representative to attend PACE meetings. Being located in Boise, this involves a commitment of not only the time

of the meetings, but 2 hours and 125 miles each way. Why do I invest an entire day of staff time and the travel expense in this?

To me, being part of an organization means participating, serving, and helping to direct that organization. As a side benefit, it also gives the **STAR** Program a little 'face time' with the folks in Twin Falls. Nothing takes the place of face-to-face conversation. Whether working on campus or not, it is very easy to get consumed with our own

Cont'd page 6



Share your Tips

Do you have a way of doing some of your duties at work that awed your coworkers or amazed your manager? If you do, please share with us, from tech tips to organizational tricks, from multitasking to quality control, or any "how to's" that can make everyone else's work-load easier.

Please email them to: maria@idahostar.org

SOAR, the Sky is the Limit

As you interact with new students in your particular capacity as a CSI employee, please direct them toward this important first step.

orientation efforts (Money Matters, Student 101, and General Advising), but will go beyond this to include a more direct intake, establishing connections early with students and allowing for advising, academic planning, and registration.

Research shows that students who participate in orientation programs are more likely to be successful in college and persist to graduation.

As we each serve as a representative of CSI in our community, it is important to communicate a clear and consistent message to all new and prospective students: "We are here to help you

succeed, and S.O.A.R. is your first step down the path to success."

S.O.A.R sessions will take place throughout the summer every Friday and Monday, May 2nd-August 1st. As you interact with new students in your particular capacity as a CSI employee, please direct them toward this important first step.

By mid-June S.O.A.R. has had a total of 366 students sign up to attend a session. Of the 16 sessions completed to date, CSI staff has seen 148 students (about a 70% show rate). 119 of those students are now registered for Fall classes.

For more information go to csi.edu/soar.



As CSI continues to create additional focus on Student Success on our campus, we are working to create a clear pathway to achievement. One step along this path is early connection and entry for our new students. To address this early connection and entry process, we started a new intake program called "S.O.A.R."

Student Orientation, Advising and Registration (S.O.A.R) sessions are designed to give all newly admitted students an introduction to CSI. These sessions will include information presented as a part of past

News from: The Refugee Center

The Refugee Center is moving, holding summer school, and looking for volunteers.

- ◆ The Refugee Center is temporarily moving into the old Wind Energy building off Madrona while remodeling begins on the facility. They will be closed June 30 to July 4 to move the offices, and will reopen on July 7 at 8 am.
- ◆ Magic Valley Refugee day was June 20. This is the first year it was held on the CSI campus. Despite the change in location, they still had a good turnout from the community. There were displays of cultural items from the 9 different ethnicities they've resettled within the last year; and 7 provided samplings of food! Those who attended also enjoyed performances done by the Burundi, Nepali, Burmese and Eritrean communities.
- ◆ Refugee Summer school for kids ages kindergarten to grade 12 will begin on July 21 and run through August 14. The summer school will be held at Lighthouse School Monday through Thursday from 8:30 am to approximately 12:30. There will be a grade school group and a Jr. High/High school group. The Refugee Center is looking for volunteers. If you're interested, call Tara at 736-2166.



At the Water Cooler

Tamara Harmon - CSI Foundation

At the Water Cooler you'll meet other CSI's employees and get to know them better. Meet Tamara Harmon, Administrative Assistant, CSI Foundation.

Tamara Harmon is the Administrative Assistant at the CSI Foundation. "I spend my time planning events, scheduling appointments, processing donations and receipt letters, and planning meetings,"

Tamara explains. "My favorite days are when we have students come in who are at the end of their rope in terms of finances and they need a little bit of money to pay for a book or a class fee. Being able to see the results of what I do in the faces of these students who are working so hard to achieve their dreams is very fulfilling for me, personally and professionally. We also get the greatest thank you cards from students; some of them even have pictures of families who have received a day care scholarship. They are my favorite."

Tamara has been working for CSI for over six years, first at the Fine Arts Center part-time for five years, and then in the Foundation for a year and a half. Her story with CSI goes further than that, though. "My dad, Leo Malberg, was hired in the AV department when I was 10 or 11 years old," Tamara recalls.

"He worked in the Canyon Building and I remember coming



to work with him and thinking it was so cool to pretend I was a big TV director and use the buttons and slides to make different camera shots come up in the editing screen. Growing up we would participate in lots of the CSI family activities, like the employee picnic."

When she was 18, Tamara started school at CSI's Theater Program (where she met her husband, Jud Harmon) and three years later received her AA in Theater. After leaving Twin Falls for a few years, the couple decided they wanted to raise their kids in Twin Falls, and Jud found a full-time job at the Fine Arts Center.

They both became very active at CSI once more and she eventually found a part-time job at the Fine Arts Center. "The summer before my youngest child started school, I was looking for full-time career options," Tamara said. "I didn't want to leave CSI, and one day I

saw an admin assistant job open up with the Foundation. Without really knowing much about the Foundation, I applied for the job. After interviewing, I got a call from Deb that I was the successful candidate and she offered me the job. That phone call not only changed my career plans, but changed my life."

Now it's her kids', Abigail (10) and Isaac (7), turn to come visit her on campus and participate at the family picnic and other CSI events. "My kids have grown up on campus and everyone I have had the privilege to work around has been incredibly supportive and open to me and my family."

Her plans for the future include CSI. "My dream is to stay right where I am," Tamara said. "I'm working on a General Business Degree at CSI right now and I intend to continue my education to Master's Degree. When I started in the Foundation office, I didn't really know what I wanted for a career. Shortly after being hired, I knew that more than anything, I wanted to stay in this office. I can see that the Foundation makes a big difference in so many lives and that the impact is felt community wide. I have always loved CSI and how it makes me feel about myself as a student, as an employee and as a person."

Upcoming Events

Rafting the Snake River

PACE is working with Idaho Guide Service to provide an affordable opportunity to take a trip down the Hagerman section of the Snake River that is located approximately 25 miles downstream from Twin Falls. This is a CLASS 3 trip with plenty of whitewater action, yet not too crazy for those who have never been rafting before.

The first trip (Friday, July 11) is a night-time float by the light of a full moon. After your night-time cruise, you will have the opportunity to toast some marshmallows and eat s'mores by a fire. The second trip (Saturday, July 12) will be a daytime trip with some beautiful scenery that is a



little longer down the same stretch of river. You will bring a sack lunch and take a break to eat as you make your way from Hagerman to Bliss.

Cost: \$35 per person per trip. You are welcome to invite friends and family, too! Space is limited, sign up early.

Call Community Ed: Diane at 732-6442, Ashley 732-6441, or Stacy 732-6290.

Check Out These Links...

PACE members have several resources online for finding more upcoming events and things to do.

- Wellbeing: wellness.csi.edu
- CSI Events Calendar: www.csi.edu/calendar/
- E-Notes: www.hr.csi.edu/enotes/

Did we miss your event or link? Send us a message and we'll include it in our next issue: SParsons@csi.edu

Ann Keane leaving PACE News



The PACE newsletter had its beginnings in 2002. At that time, Cindy Flowers took care of the newsletter. She stepped down in 2004. I began in 2005. Here it is 8 ½-9 yrs. later and I have decided to let someone else experience this wonderful adventure. Maria Ortega from *STAR* will be the new editor of the newsletter. She has a lot of ideas for the newsletter and is excited to take the helm. I hope all of you will support her as you have supported me. This has been a great love for me and I have enjoyed the ride

tremendously. I would like to thank all of those folks who contributed to the newsletter over the years for various articles: administration, dept. chairs, committee chairs and others. I would also like to say thank you for all the positive feedback I have received over the years.

I will send the newsletter out for Maria and I will continue with my Picks from the Shelf.

Ann Keane—PACE newsletter editor - RETIRED

New Faces on Campus



Eric Nielson

Replacing Monty Arrossa—HR Director—Taylor 123A, ext. 6267

Howdy. My name is Eric Nielson and I am extremely excited to be joining the CSI Family. Most recently I was part of the startup management team at Chobani in Twin Falls, overseeing the Human Resources department for more than 800 employees. For seven years before that, I managed Cactus Pete's Human Resources department in Jackpot, NV.

After receiving my associate's degree from CSI, I earned a bachelor's degree from Boise State University. My wife and I have one daughter and live in Kimberly. We spend most of our free time riding horses, moving cows, and enjoying everything the Magic Valley has to offer.

Steven "Scott" Dufford

Replacing Kathleen Phillips—Office Specialist—Idaho STAR, 208-639-4548

Steven "Scott" Dufford is an Office Specialist with the Idaho STAR Motorcycle Safety Program in Boise. Originally from Alaska, where he was born and raised, Scott moved to Boise in the fall of 2013.

He loves the weather and the town. His passion is flying, and he is a licensed pilot. Scott rode motorcycles for 25 years in Alaska, and currently rides a Kawasaki KLR650.



Brandi Turnipseed

New Position—Workforce Development Director—ATIC 107, ext. 6378

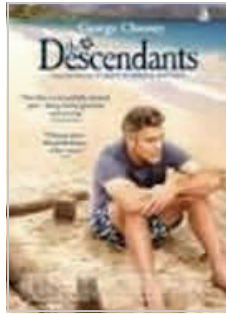
Hello CSI Family. After a short hiatus to join the Chobani startup team and build a modest yogurt production family, I am thrilled to be back in the family as Director of Workforce Development. During

my time at Chobani, I served in several capacities from Plant Operations, Corporate Communications, Project Management, and Community Relations.

This experience was one of the toughest and most valuable professional opportunities anyone could ask for. I am excited to capitalize on my industry experience and build upon the strong foundation of CSI to create a world-class Workforce Development Department for our community.

Aside from making yogurt, I enjoy all things outdoors- camping, running, kayaking, biking, and hiking...my first LOVE is horses. This year, I am enjoying being a first-year race horse owner and watching my horse *Left My Mark*, aka "Lefty" speed to the finish line.

Picks from the Shelf



The Descendants, DVD – George Clooney plays a husband facing some hard life decisions. His wife is in an accident and is on life support. While in the hospital his older daughter shares some truth about her parent’s marriage. This movie is full of the angst and drama of family. It is both heartache and hope. It is chock full of financial values. It is definitely worth your time. Listen for the line that George says in the movie about money. I think you will appreciate it.



Extremely Loud & Incredibly Close, DVD – A boy and a key on a journey of discovery. What a journey it is. This is a journey concerning grief of a young boy; a journey of meeting new people and discovering a grandfather; a journey that touches the heart. Well worth your time.



Something the Lord Made – DVD – What a true to life story. Two doctors, one with a degree and one without, one African American and one White, develop ground-breaking heart surgery at John Hopkins at a time when working together was unheard of and unacceptable. This movie will warm your heart. Alan Rickman and Mos Def are fantastic in their portrayals of these two doctors.



ISHI, The Last Yahi – DVD – American Experience presented this story on PBS some time ago. I had missed part of it, so I have to say I was thrilled to find our very own library acquired the DVD. This is a most amazing first-hand account of the last surviving member of the Yahi Native American tribe. What is even more remarkable is the fact when Ishi realized he was alone in his world that he willingly stepped out into the world of the people that decimated his very own tribe. Any person with interest in Anthropology, Native American studies or History would do well in watching this remarkable story.

– Ann Keane, ADC Office Spec.

Why I support PACE

Cont'd from page 1

work and the people in our own department. Involvement in PACE is just one way to maintain connections with people who are in different departments, different



buildings, and maybe even in different parts of the state. In addition to participating in the good work that PACE does, it serves as a concrete reminder that we are all CSI, and are integral parts of something larger than ourselves, our colleagues, and our departments.

– Stacey “Ax” Axmaker, Idaho STAR Program Director

If you have a favorite book, movie or CD from our very own CSI library and you would like to recommend to your co-workers, let us know about it. You don’t need to be a professional critic; all you need is two to four sentences giving info on why you think it is something folks might want to spend their time on. Send them to: Ann Keane, ext. 6530, akeane@csi.edu